



**Water and
Environment Support**
in the ENI Southern Neighbourhood region

External monitoring and provision of support to the WES Demonstration projects

Brainstorming Event

SWIM-H2020 SM Demonstration Project Fact Sheet

Tuesday, 23.02.2021, 13:30 – 18:00 EET,
Online meeting

Presented by: Ms Suzan Taha, WES Key Water Expert



I. General Information



**Water and
Environment Support**
in the ENI Southern Neighbourhood region

Project Name:	Reuse of Treated Waste Water for Agricultural Irrigation in Southern Gaza Strip		
Lead applicant / Company:	Oxfam		
Contact Info (For internal use):	Name: WASEEM B.		Family Name: MUSHTAHA
	Email: wassem.mushtaha@oxfam.org		Phone: +972 599 861030
Start & End Dates	Start Date: 1-4-2017	End Date: 31-3-2020	Duration (Months): 36
Total Budget (€):	2,176,375		
EU contribution (€):	1,741,100		
Country:	Palestine, Gaza Strip		
Partners:	Palestinian Environmental Friends Association (PEF) Palestinian Agricultural Development Association (PARC)		

II. Specific information



**Water and
Environment Support**
in the ENI Southern Neighbourhood region

Overall objective:	To contribute to more sustainable water and agricultural practices in the Gaza strip through reducing land-based sources of marine pollution
Specific objectives:	To strengthen integrated water resource management in the Gaza strip through innovative environmental and agricultural solutions in southern Gaza.
Target Area:	Al Mawasy , Western area of Rafah in the Gaza Strip, Palestine
Target population:	<ul style="list-style-type: none">▪ The project directly targeted 5,560 individuals from Al Mawasy farmers' community (3,002 males, 2,558 females) including 110 small and medium scale vulnerable farmers (96 men, 14 women) in Al Mawasy , Rafah Governorate and their families (725 individuals: 49% male, 51% female), who benefited from improved access to irrigation water, agricultural inputs, irrigation systems, climate-smart agricultural inputs and techniques.
Key problems addressed:	<ul style="list-style-type: none">▪ Water scarcity in Gaza strip as a main challenge facing farmers, buying safe irrigation water, overburdening vulnerable farmers▪ Sea water pollution▪ Lack of knowledge of targeted communities on health and environmental issues, practices and safety procedures on TWW▪ An in-depth understanding of the impact of climate change on agriculture in Gaza, investigating best agriculture practices, evidence-based recommendations and insights to stakeholders supporting the agricultural sector
Main outputs:	<ul style="list-style-type: none">• 20 hectares (ha) of productive agricultural land have been irrigated by reuse of TWW through an innovative and sustainable wastewater treatment and irrigation system• Wastewater re-use management has been institutionalized through development and activation of a legal framework and governance model that includes a sustainable and equitable tariff system• A monitoring and verification system for the full treatment and reuse cycle, from soil to product quality monitoring, has been established and activated.• Acceptance of using TWW for agriculture irrigation has been generated among farmers and consumers.

II. Specific information



Water and Environment Support
in the ENI Southern Neighbourhood region

Beneficiaries:

110 Small and medium scale farmers, 20 ha , 289 laborer's/workers **CFW**, 50 Operators and engineers , 5,560 F/M individuals (public awareness) and 15 % of the entire Gaza population (300,000/ **mass media**)

Key Stakeholders involved:

The Palestinian Water Authority (PWA), The Environmental Quality Authority (EQA), The Ministry of Agriculture (MoA), The Coastal Municipal Water Utility (CMWU, The Ministry of Health (MoH), Rafah municipality, Al Mawasi Charity Association

Notes about the project that you might see important:

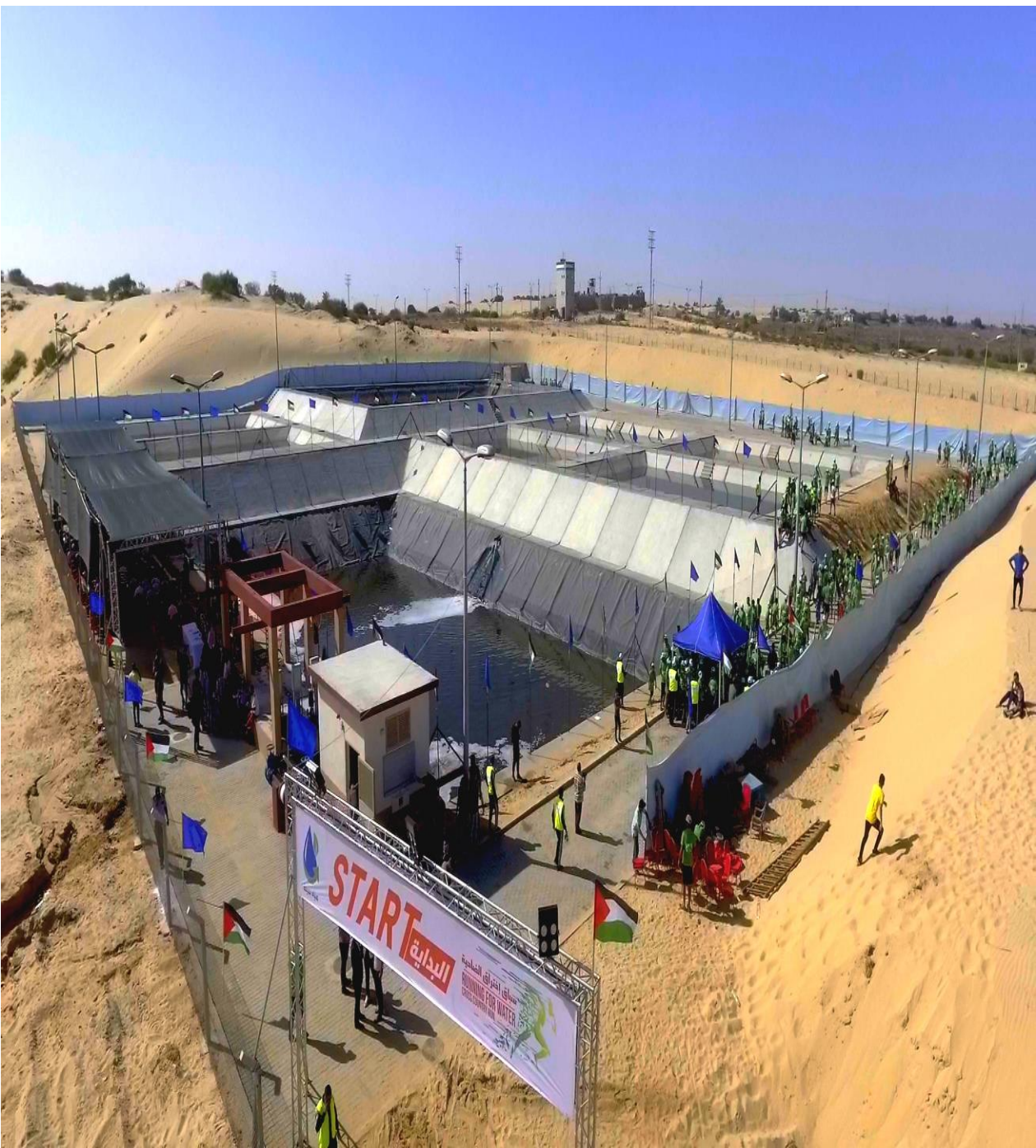
The main achievements of the action include successful mitigation to **re-locate the Action** to Al Mawasi in Rafah Governorate; strengthening successful partnership and synergies between Oxfam and government stakeholders such as the PWA, **CMWU**, MoA, and MoH; the development of a professional design for the post treatment plant and the associated supply system, the construction of the six **sand** filters and the associated **supply** and storage ponds, the construction of the carrier line and the **WWTU**, strong community and farmer engagement in developing a legal framework, tariff system and monitoring strategy, embedding safe and sustainable approaches for the treatment and reuse of wastewater amongst farmers, formulation of the Institutional Waste Water Reuse Unit and Community waste water reuse unit, organizing the inauguration ceremony, and finally and enhancing female participation through on-going community mobilization and active involvement.

Current situation:

- The **WWPT** plant was handed over by Oxfam to the administrative unit led by MoA which has been formulated during the project implementation to ensure the sustainability of the WWPT plant, the plant was fully operated for 7 months.
- The **WWPT** plant operation was suspended due to the COVID-19 pandemic outbreak in Gaza strip based on the recommendation of MoH to mitigate the transmission of COVID-19. A committee from the administrative unit, MoH and MoA met and advised to install ultraviolet disinfection unit (UV) considering the recommendation of the project Evaluation report to enhance the specification cycle of treatment and to mitigate the impact of COVID-19.
- Oxfam has mobilized fund to cover the cost of the UV unit but the lockdown and restriction on movements imposed by local authorities as a response to COVID-19 outbreaks and the restrictions on borders applied by the Israeli authorities including the issue of **dual use materials** affected the entrance of the ultraviolet disinfection unit.
- Oxfam and PWA succeeded to have the approval of Israeli authorities to enter the UV unit to Gaza In January 2021. Hopefully by the Mid of March 2021, the administrative unit will be able to resume pumping of the TWW to farmers.









**Water and
Environment Support**
in the ENI Southern Neighbourhood region

Thank you for your attention!

